

RRB NTPC Previous Year Paper 14_(Solutions)

S1. Ans.(d);

Sol. Summer is hot → de fe ba ...**(i)**
 Come cold summer → ja ha ba ...**(ii)**
 Winter is cold → pa ja de ...**(iii)**
 Come hot winter → ?
 From **(iii)** winter → pa
 Is → de from **(i)&(iii)**
 Come → ha from **(ii)**
 ⇒ pa ha de

S2. Ans.(c);

$$\begin{array}{r} 451 \\ 14 \overline{)6321} \\ \underline{56} \\ 72 \\ \underline{70} \\ 21 \\ \underline{14} \\ 7 \end{array}$$

S3. Ans.(b);

Sol. The chronology of first six Mughal emperors are Babur, Humayun, Akbar, Jahangir, Shah Jahan, Aurangzeb (Alamgir) . Thus Jahangir was the 4th Mughal emperor of India.

S4. Ans.(b);

Sol. $48 \div 8 + 6 \times 9 - 31 = ?$
 $6 + 54 - 31 = 29$

S5. Ans.(a);

Sol. In 1600, Queen Elizabeth 1 granted monopoly to East India Company for trade with East Indies. The first factory of the company was set up in Masulipatnam(present day machilipatnam,) in 1611. in 1612, it got permission from Mughal Emperor Jahangir to establish Factories in Surat.

S6. Ans.(b);


Sol. Ramdas → $90,000 \times 12$
 Shyamdas → $30000 \times x$

Atq,

$$\frac{90000 \times 12}{30000 \times x} = \frac{4}{1}$$

$$\Rightarrow \frac{36}{x} = 4 \Rightarrow x = 9$$

Required months = $12 - 9 = 3$



• LIVE BILINGUAL

MISSION RRB NTPC 2020 Complete Preparation Pack

Live Class | Test Series | Ebooks

S7. Ans.(c);

Sol. Methane is a colorless odorless gas. It is also known as marsh gas. It is easily ignited.

S8. Ans.(c);

Sol. Hawa Mahal is a palace in Jaipur, India. It is constructed of red and pink sandstone.

S9. Ans.(c);

Sol. $x + 2x + 3x = 180$

$$6x = 180$$

$$x = 30$$

$$\text{largest angle} = 3x = 90$$

S10. Ans.(c);

S11. Ans.(b);

Sol. The main objective of Kabaddi is to grab points by raiding into the opponent's court and touching as many opponent players as possible without getting caught on a single breath.

S12. Ans.(d);

Sol. $S = 22 \times 10 = 220$

Atq,

$$\frac{220+2x}{24} = 11$$

$$\Rightarrow 220 + 2x = 11 \times 24$$

$$\Rightarrow 264 = 2x + 220$$

$$2x = 44$$

$$x = 22$$

$$\text{Mean} = \frac{2 \times 22}{2} = 22$$

S13. Ans.(b);

Sol. Let the angle = x

$$x = 10 + \frac{1}{3}(90 - x)$$

$$x = 10 + 30 - \frac{x}{3}$$

$$\frac{4x}{3} = 40$$

$$x = 30$$

$$\Rightarrow 90 - x = 60 \rightarrow \text{greater angle}$$

S14. Ans.(b);

Sol. Using relative velocity concept, time = $\frac{12}{9-7} = 6$ hrs

S15. Ans.(a);

Sol. Distance = $\frac{48 \times 40}{60} = \frac{48 \times 2}{3} = 32$ km

Now,

$$32 = \frac{x \times 32}{60}$$

$$x = 60 \text{ kmph}$$

S16. Ans.(c);

Sol. Coefficient of variation = $\frac{SD}{Mean} = \frac{7}{13} = 53.85\%$

S17. Ans.(c);

Sol. Friction generate between disc and pads and kinetic energy of wheel convert into heat and friction offer resistance to rotation and hence stops the vehicle.

S18. Ans.(b);

S19. Ans.(a);

S20. Ans.(b);

Sol. The ability to convert voltage to and from mechanical stress is called piezoelectricity. Quartz crystals maintain a precise frequency standard, which helps to regulate the movement of a watch or clock, thus making the timepieces very accurate. quartz crystal used in quartz clocks is chemically Silicon dioxide.

S21. Ans.(b);

Sol. President is the head of the state in India.

S22. Ans.(b);

Sol. The politics of the People's Republic of Bangladesh takes place in the context of a parliamentary representative democratic republic with government headed by the prime minister.

S23. Ans.(a);

Sol. Principal is single, rest are plural

S24. Ans.(c);

Sol. Assam and Chhattisgarh are two Indian States which share border with 7 states.

S25. Ans.(c);

Sol. Squash is a ball sport played by two (singles) or four players (doubles squash) in a four-walled court with a small, hollow rubber ball.

S26. Ans.(b);

Sol. The United Nations Development Programme (UNDP) has appointed award-winning action heroine Michelle Yeoh as its Goodwill Ambassador in March 2016.

S27. Ans.(a);

Sol. Deliquescence, the process by which a substance absorbs moisture from the atmosphere until it dissolves in the absorbed water and forms a solution.

S28. Ans.(c);

Sol. The process of standardization involves reduction of fat content in milk from the natural minimum of 3.25%.

S29. Ans.(c);

Sol. fins, fish swim by fins

**Bilingual**

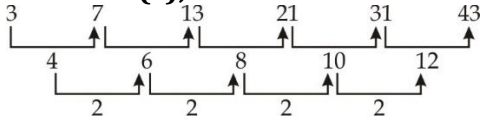
Special Offer

RRB NTPC
CBT I

65 TOTAL TESTS

S30. Ans.(c)

S31. Ans.(c);



S32. Ans.(d);

Sol. Maharashtra has the second highest number of seats(48) in the Lok Sabha.

S33. Ans.(b);

Sol. -2 series

AFYGP

S34. Ans.(d);

Sol. Stainless steel is a metal alloy, made up of steel mixed with elements such as chromium, nickel, molybdenum, silicon, aluminum, and carbon. Iron mixed with carbon to produce steel is the main component of stainless steel. Chromium is added to make it resistant to rust.

S35. Ans.(a);

Sol. Darjeeling Tea was the first Indian product to get the geographical indication tag. In 2004, the famous beverage got the recognition

S36. Ans.(d);

Sol. On the Fahrenheit scale, the freezing point of water is 32 degrees Fahrenheit (°F) and the boiling point is 212 °F (at standard atmospheric pressure)

S37. Ans.(d);

Sol. +2 pattern series GJMP

S38. Ans.(a);

Sol. $R = \frac{8}{2} = 4\%$

$T = 2$

$P = 10000$

Amount = $10000 \left(1 + \frac{4}{100}\right)^2$

$= 10000 \times \frac{676}{625}$

$= 16 \times 676 = 10816$

Interest = $10816 - 10000 = 816$

Equivalent rate = R

$816 = \frac{10000 \times R \times 1}{100}$

$R = 8.16\%$

S39. Ans.(c);

Sol. File extension DOCX is a new format created by Microsoft and first used in Word 2007.

S40. Ans.(a);

Sol. $\frac{35}{2} \times \frac{1}{100} \times 800 - \frac{45}{2} \times \frac{1}{100} \times 400$

$140 - 90 = 50$

S41. Ans.(d);

Sol. $\frac{12 \times 6}{\frac{1}{4}} = \frac{x \times 6}{\frac{3}{4}}$

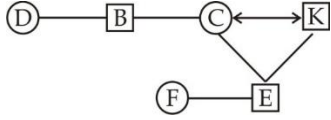
$12 = \frac{x}{3}$

$x = 36$

Addition men = $36 - 12 = 24$

S42. Ans.(a);

Sol.



Maternal aunt

S43. Ans.(a);

Sol. Ophiuchus has sometimes been used in sidereal astrology as a thirteenth sign in addition to the twelve signs of the tropical Zodiac.

S44. Ans.(c);

Sol. All other than C are flowers.

- (a) Jasmine
- (b) Marigold
- (c) Carrot
- (d) Sunflower

S45. Ans.(a);

Sol. Taxonomy usually refers to the theory and practice of describing, naming and classifying living things. Such work is essential for the fundamental understanding of biodiversity and its conservation.

S46. Ans.(a);

Sol. $625 = \frac{(100+25)}{100} x$

$x = 50$

SP = 500

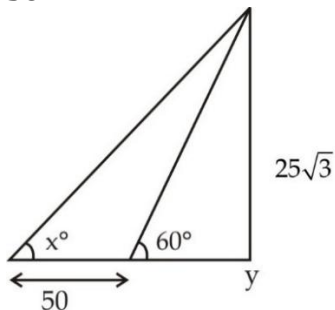
Atq,

$500 = \left(\frac{100+50}{100}\right) CP$


$CP = \frac{500 \times 2}{3} \approx 333$

S47. Ans.(b);

Sol.



TEST SERIES
Bilingual



**RRB NTPC
PREMIUM**

- ◆ CBT-I and CBT-II
- ◆ 30 Previous Year Papers

120 TOTAL TESTS

$$\frac{25\sqrt{3}}{y} = \sqrt{3}$$

$$y = 25$$

$$\Rightarrow \frac{25\sqrt{3}}{75} = \tan x$$

$$= \frac{1}{\sqrt{3}} = \tan x$$

$$\Rightarrow x = 30^\circ$$

S48. Ans.(a);

Sol. $30 \times 14 = x \times 20$

$$x = 21$$

$$\text{required persons} = 30 - 21 = 9$$

S49. Ans.(c);

Sol. Let capital = x

$$\text{Sum of interests} = \frac{x}{2} \times \frac{5}{100} \times 2$$

$$\frac{x}{20} \dots (i)$$

$$\frac{x}{4} \times \frac{10}{100} \times 2$$

$$= \frac{x}{20} \dots (ii)$$

$$\text{Rest} = x - \frac{x}{2} - \frac{x}{4}$$

$$= \frac{4x - 2x - x}{4}$$

$$= \frac{x}{4}$$

$$\frac{x}{4} \times \frac{8}{100} \times 2$$

$$= \frac{x}{25} \dots (iii)$$

Now atq,

$$(i) + (ii) + (iii) = 2800$$

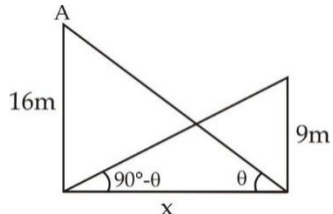
$$\Rightarrow \frac{x}{20} + \frac{x}{20} + \frac{x}{25} = 2800$$

$$\frac{5x + 5x + 4x}{100} = \frac{14x}{100} = 2800$$

$$x = 20000$$

S50. Ans.(d);

Sol.



$$\frac{16}{x} = \tan \theta \dots (i)$$

$$\frac{9}{x} = \tan(90 - \theta) = \cot \theta$$

$$\Rightarrow \frac{16}{x} = \frac{1}{9/x}$$

$$\frac{16}{x} = \frac{x}{9}$$

$$x = 12$$

S51. Ans.(c);

Sol. Abrasives constitute at least 50% of a typical toothpaste, Fluoride in various forms is the most popular active ingredient in toothpaste to prevent cavities. Many, although not all, toothpastes contain sodium lauryl sulfate (SLS) or surfactants mainly for improving its cleansing power.

S52. Ans.(b);

Sol. Pritesh > Suresh > Ramesh ...(i)

Rakesh > Ramesh ...(ii)

Rakesh > Jinesh > Shortest ...(iii)

Jinesh > Pritesh ...(iv)

From

(i), (ii), (iii) and (iv)

Shortest = Ramesh

S53. Ans.(d);

Sol. Since no exact relation is given.

S54. Ans.(b);

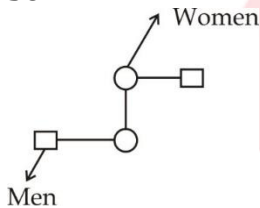
Sol. Pritesh is shorter than Rakesh

S55. Ans.(c);

Sol. S is unique in TEASER.

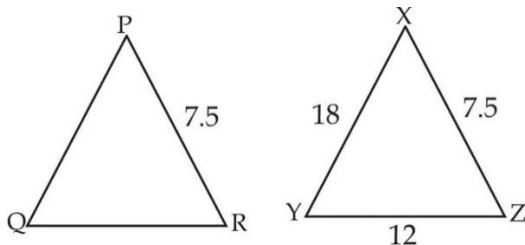
S56. Ans.(b);

Sol.



S57. Ans.(b);

Sol.



$$\frac{PQ}{QR} = \frac{18}{12} = \frac{3}{2}$$

S58. Ans.(b);

Sol. Pluto was finally discovered in 1930 by Clyde Tombaugh at the Lowell Observatory, based on predictions by Lowell and other astronomers.



TEST SERIES
Bilingual



AAI
Junior Executive
(ATC)

10 Full-Length Mocks

S59. Ans.(c);

Sol. $\frac{N}{D} = \frac{3}{5}$; Also, $\frac{N+10}{D+10} = \frac{5}{7}$

\Rightarrow 2 units corresponds to 10

\Rightarrow 1 unit \Rightarrow 5

\Rightarrow smaller = $3 \times 5 = 15$

S60. Ans.(d);

Sol. On July 1, 1955, as per the State Bank of India Act 1955, the State Bank of India (SBI) was constituted and it took over the business and undertaking of the Imperial Bank.

S61. Ans.(a);

Sol. Ratio of 1st = $2 : 3 = M : W$

2nd = $7 : 3$

Atq,

$$\begin{array}{ccc} \frac{2}{5} & & \frac{7}{10} \\ & \searrow \quad \nearrow & \\ & \frac{1}{2} & \\ & \nearrow \quad \searrow & \\ \frac{2}{10} & & \frac{1}{2} \times \frac{2}{5} = \frac{1}{5} \end{array}$$

Ratio = $\frac{2}{10} \times \frac{10}{1} = 2 : 1$

S62. Ans.(b);

Sol. $335 \times 335 - 165 \times 165$

$(335)^2 - (165)^2$

$[(a^2 - b^2 = (a - b)(a + b))]$

$(335 - 165)(500)$

$170 \times 500 = 85000$

S63. Ans.(d);

Sol. Tomato is not generally used as a fruit.

S64. Ans.(d);

Sol. Prime Minister Narendra Modi launched the Make in India Week at NSCI, Worli, Mumbai.

S65. Ans.(b);

Sol. Ranchi is the capital of Jharkhand

S66. Ans.(d)

S67. Ans.(c);

Sol. The Forbidden City is a palace complex in central Beijing, China. The former Chinese imperial palace from the Ming dynasty to the end of the Qing dynasty, it now houses the Palace Museum.

S68. Ans.(c);

Sol. Rate of heat conduction in solids mainly depends on Temperature Difference, Material, Area, Thickness or Distance.

S69. Ans.(c);

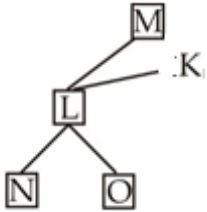
Sol. As per tiger census report 2014, the population of tigers in India has increased from 1,706 in 2011 to 2,226 in 2014. This tiger census report was released by Union environment minister Prakash Javadekar.

S70. Ans.(a);

Sol. The World Wetlands Day is observed annually on February 2 to mark the adoption of the Convention on Wetlands in the city of Ramsar in Iran in 1971. The 2016 theme is "Wetlands for our Future – Sustainable Livelihoods"

S71. Ans.(d);

Sol.



Since, gender of K is not known
Can't be determined

S72. Ans.(a);

Sol. Chlorofluorocarbons (CFCs) are nontoxic, nonflammable chemicals containing atoms of carbon, chlorine, and fluorine. They are used in the manufacture of aerosol sprays, blowing agents for foams and packing materials, as solvents, and as refrigerants.

S73. Ans.(b);

Sol. $x^2 + \frac{1}{x^2} - 2 = 6 - 2$

$\Rightarrow \left(x - \frac{1}{x}\right)^2 = 4$

$\Rightarrow x - \frac{1}{x} = \pm 2$

$\Rightarrow 10x - \frac{10}{x} = \pm 20$

S74. Ans.(b);

Sol. The last time this comet was near earth was in 1986, and it is projected to return in 2061

S75. Ans.(b);

Sol. Asymmetric digital subscriber line (ADSL) is a type of digital subscriber line (DSL) technology, a data communications technology that enables faster data transmission over copper telephone lines than a conventional voice band modem can provide.

S76. Ans.(c);

Sol. On November 10, 2014, Parrikar left as Goa's chief minister and took over the powerful defence minister's post, replacing Arun Jaitley.

S77. Ans.(c);

Sol. $25 + 25 \div 5 + 2 \times 15$

$25 + 5 + 30 = 60$

NRA-CET Ready

ALL EXAM

BANK | SSC | TEACHING & OTHERS

TEST PACK

12 Months Validity*

S78. Ans.(a);

Sol. SMART → 31524 ... (i)

MARBLE → 428376 ... (ii)

EAT → 537

From (i) & (ii) A/R/M = 3/2/4 ... (iv)

In any order

From (iii) & (iv)

E → 7 A → 3 S → 1

B → 8/6 T → 5

⇒ 618537

S79. Ans.(d);

Sol. All other are data storage devices.

S80. Ans.(c);

Sol. PC users can consider both local backup from a computer's internal hard disk to an attached external hard drive or removable media, such as a thumb drive.

S81. Ans.(b);

Sol. Population variance = $(SD)^2 = (9.5)^2 = 90.25$

S82. Ans.(c);

Sol.

$$\begin{array}{r} 14084 \\ 71 \overline{)999999} \\ \underline{71} \\ 289 \\ \underline{284} \\ 599 \\ \underline{568} \\ 319 \\ \underline{284} \\ 35 \end{array}$$



Required number = $999999 - 35 = 999964$

S83. Ans.(a);

Sol. Bikxie Pink, the first two-wheeler public transportation service for women, started by a married couple Divya Kalia and Mohit Sharma in Gurgaon to ferry women.

S84. Ans.(b);

Sol. $a - \frac{1}{a} = \frac{3}{4}$

$$a^3 - \frac{1}{a^3} = \left(a - \frac{1}{a}\right) \left(a^2 + \frac{1}{a^2} + 1\right)$$

$$= \frac{3}{4} \left[a^2 + \frac{1}{a^2} + 1\right] \dots (i)$$

$$a - \frac{1}{a} = \frac{3}{4}$$

$$a^2 + \frac{1}{a^2} - 2 = \frac{9}{16}$$

$$\Rightarrow a^2 + \frac{1}{a^2} = 41/16$$

$$a^2 + \frac{1}{a^2} + 1 = \frac{57}{16} \dots (ii)$$

From (i) and (ii)

$$a^3 - \frac{1}{a^3} = \frac{3}{4} \times \frac{57}{16} = \frac{171}{64}$$

S85. Ans.(d);

Sol. Required No. = HCF {3050 - 7, (5200-9)}
= {3043, 5191} = 179

S86. Ans.(c);

Sol. Male employees in India = 150

$$\begin{array}{r} \text{total} = 285 \\ +240 \\ +305 \\ +170 \\ \hline 1000 \end{array}$$

$$\% = \frac{150}{1000} \times 100 = 15\%$$

S87. Ans.(d);

S88. Ans.(b);

Sol. Female of US = 105

Female of Canada = 50 + 10 = 60

$$\text{Ratio} = \frac{105}{60} = \frac{21}{12} = 7 : 4$$

S89. Ans.(d);

Sol. The Dominion of India also known as the Union of India, was a predecessor to the modern-day Republic of India and an independent state that existed between 15 August 1947 and 26 January 1950.

90. Ans.(c);

Sol. The man of the match award in the final of 2016 Asia Cup T20 is given to Shikhar Dhawan.

S91. Ans.(c);

Sol. a = 11

$$\ell = 11 \times 25 = 275$$

$$S_n = \frac{n}{2} (a + \ell)$$

$$\text{average} = \frac{S_n}{n} = \frac{(a+\ell)}{2} = \frac{11+275}{2}$$

$$= \frac{286}{2} = 143$$

S92. Ans.(b);

Sol. $x + y + z = \frac{250}{2x} = \frac{125}{x} \dots(i)$

$$= \frac{50}{y} \dots(ii)$$

$$= \frac{50}{z} \dots(iii)$$

$$\frac{125}{x} = \frac{50}{y} = \frac{50}{z} = k \text{ (let)}$$

$$\frac{5}{x} = \frac{2}{y} = \frac{2}{z} = k$$

$$x : y : z = \frac{5}{k} : \frac{2}{k} : \frac{2}{k}$$

$$\Rightarrow 5 : 2 : 2$$

$$x = 5a$$



LIVE **BILINGUAL**

MISSION RRB NTPC 2020
Complete Preparation Pack

Live Class | Test Series | Ebooks

$$y = 2a$$

$$z = 2a$$

now (i) \rightarrow

$$2 \times 5a (9a) = 250$$

$$90a^2 = 250$$

$$a = \frac{5}{3}$$

$$\Rightarrow 3x + 6y + 15z$$

$$= 3 \times \frac{5 \times 5}{3} + 6 \times 2 \times \frac{5}{3} + 15 \times 2 \times \frac{5}{3}$$

$$= 25 + 20 + 50 = 95$$

S93. Ans.(c);

Sol. The Kakori Conspiracy was a train robbery that took place between Kakori and, near Lucknow, on 9 August 1925 during the Indian Independence Movement against the British Indian Government.

S94. Ans.(a);

$$\text{Sol. } 979 = \frac{(100-11)}{100} \times \text{CP}$$

$$\text{CP} = \frac{979 \times 100}{89}$$

$$\text{CP} = 1100$$

$$\text{SP} = 1232$$

$$\Rightarrow \text{Profit \%} = \frac{1232-1100}{1100}$$

$$= \frac{132}{1100} \times 100 = 12\%$$

S95. Ans.(c);

Sol. HCF \times LCM = Products of two numbers

$$45 \times 270 = 2y \times 3y$$

$$6y^2 = 45 \times 270$$

$$2y^2 = 45 \times 90$$

$$y^2 = 45 \times 45$$

$$y = 45$$

$$\text{Smaller number} = 2y = 2 \times 45$$

$$x = 90$$

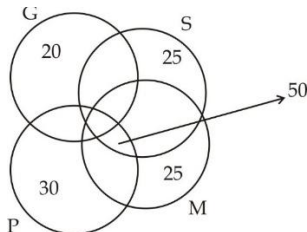
$$x^2 = 8100$$

S96. Ans.(a);

Sol. Bronchitis is an inflammation of the bronchial tubes, the airways that carry air to your lungs. It causes a cough that often brings up mucus. It can also cause shortness of breath, wheezing, a low fever, and chest tightness.

S97. Ans.(c);

Sol.



$$\text{Required value} = 200 - (20 + 25) = 155$$

S98. Ans.(c);

Sol. $25 + 25 + 50 = 100$

S99. Ans.(c);

Sol. $25 + 50 = 75$

S100. Ans.(b);

Sol. $MP = x$

$$SP = \frac{x}{2}$$

$$8100 = \frac{x}{2}$$

$$MP = 16200$$

$$MP = 16200 = \frac{135}{100} CP$$

$$\Rightarrow CP = \frac{16200 \times 20}{27}$$

Cost price = 12000



Bilingual

Special Offer

RRB NTPC

CBT I

65 TOTAL TESTS

