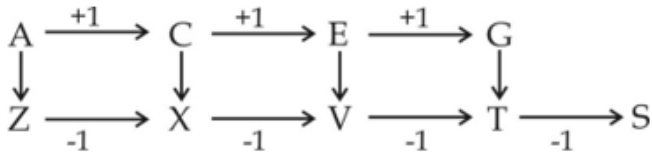


Reasoning Mega Quiz for SSC CHSL (Solutions)

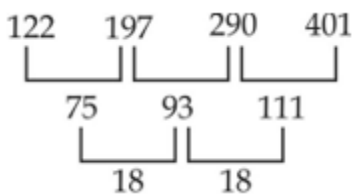
S1. Ans.(a)

Sol.



S2. Ans.(c)

Sol.



S3. Ans.(b)

S4. Ans.(c)

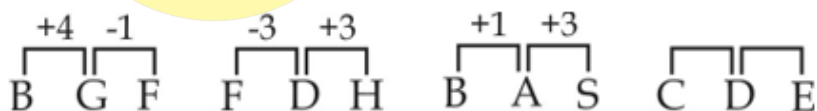
Sol. Neha Shalini Rekha Neetu Pooja

S5. Ans.(c)

Sol. Nature, Nest, News, Numeric

S6. Ans.(d)

Sol.



S7. Ans.(c)

Sol.

$$2 + 1 + 9 + 7 = 19$$

$$3 + 3 + 7 + 5 = 18$$

$$4 + 0 + 9 + 9 = 22$$

$$2 + 7 + 4 + 4 = 17$$

Complete Preparation for  
SSC Exams

**SSC**  
**EXTREME**

Video Courses, Test Series,  
eBooks

S8. Ans.(b)

Sol.

$$7 + 9 + 4 = 20$$

$$5 + 7 + 6 = 18$$

$$6 + 6 + 8 = 20$$

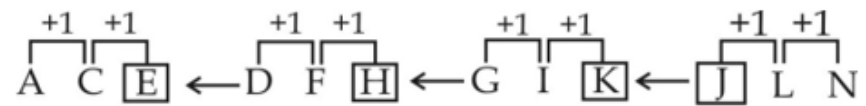
$$9 + 9 + 2 = 20$$

S9. Ans.(a)

Sol. Padma shri, Padma Bhushan, Padma Vibhushan, Bharat Ratna are Civilian awards.

S10. Ans.(a)

Sol.

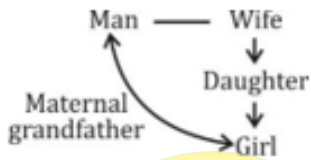


S11. Ans.(d)

Sol. 13, 11, 30, 41

S12. Ans.(c)

Sol.



S13. Ans.(d)

S14. Ans.(a)

S15. Ans.(c)

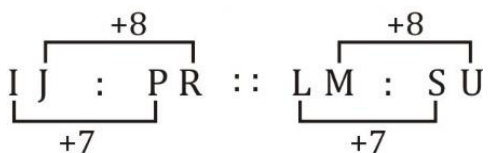
S16. Ans.(c)

Sol. Agra is situated on the bank of Yamuna

Varanasi is situated on the bank of Ganga.

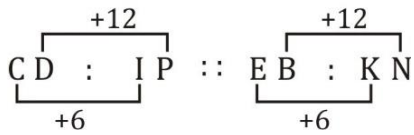
S17. Ans.(b)

Sol.



S18. Ans.(b)

Sol.



S19. Ans.(a)

Sol.

$$\frac{12}{2} \times 12 = 72$$

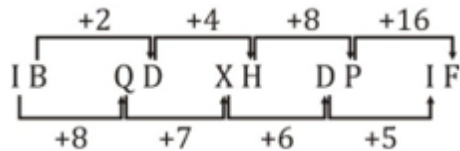
$$\frac{14}{2} \times 14 = 98$$

S20. Ans.(b)

Sol. Ashoka Chakra is present in Indian flag.

S21. Ans.(d)

Sol.



S22. Ans.(c)

Sol.

$$13 + 12 \times 1 = 25$$

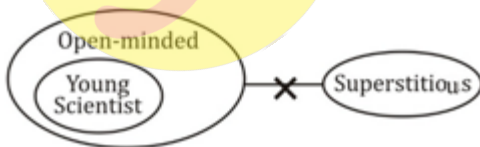
$$25 + 12 \times 2 = 49$$

$$49 + 12 \times 3 = 85$$

$$85 + 12 \times 4 = 133$$

S23. Ans.(c)

Sol.



- I. ✗
- II. ✗

Neither I nor II follows.

S24. Ans.(d)

Sol.

Pooja > Nishu > Riya > Nikita > Amrita

Nishu is the second tallest.

6 Months Subscription

# SSC CGL TIER-II MAHA PACK

Test Series, Live Classes,  
Video Course, Ebooks

Bilingual (With e-Books)

sscadda.com

S25. Ans.(c)

Sol.

- iii. Apostate
- iv. Apparel
- i. Apparent
- ii. Appointed

S26. Ans.(d)

Sol.

% @ ^ @ ! ? \* &

S27. Ans.(d)

Sol.

$$\begin{aligned}99 \times 15 &= 1485 \\31 \times 17 &= 527 \\91 \times 18 &= 1638\end{aligned}$$

S28. Ans.(a)

Sol.

$$\begin{aligned}315 \& 3 \# 9 @ 4 \% 6 \\ \Rightarrow 315 \div 3 - 9 + 4 \times 6 \\ \Rightarrow 105 - 9 + 24 \\ \Rightarrow 129 - 9 \\ \Rightarrow 120\end{aligned}$$

S29. Ans.(a)

Sol.

M N / M N O / M N O P / M N O P Q

S30. Ans.(c)

Sol.



He is facing towards the west.

TEST SERIES

Bilingual



SSC CGL 2019-20  
PRIME

400+ TOTAL TESTS

Validity : 12 Months