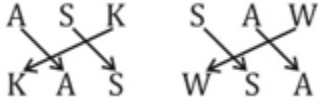


Reasoning Mega Quiz for SSC CHSL (Solutions)

S1. Ans.(d)

Sol.



S2. Ans.(a)

Sol.

$$\frac{36}{3} = \frac{12}{1} \quad \therefore \quad \frac{108}{9} = \frac{12}{1}$$

S3. Ans.(b)

Sol. Except END others have two sets of vowels.

S4. Ans.(b)

Sol.

Here

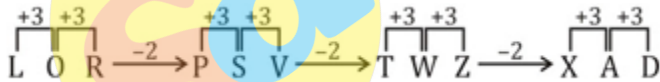
$$2 \times 3 = 6$$

$$2 \times 4 = 8$$

$$1 \times 7 = 7$$

S5. Ans.(b)

Sol.



S6. Ans.(b)

Sol. Meaningful order

3. Requirements analysis

↓

2. Conceptual Modelling

↓

4. Logical Modelling

↓

6. Schema Refinement

↓

5. Physical Model

↓

1. Implementation

Complete Preparation for
SSC Exams

SSC
EXTREME

Video Courses, Test Series,
eBooks

S7. Ans.(d)

S8. Ans.(b)

Sol.

First is name of novel, second is author of novel.

S9. Ans.(d)

Sol.

L K :: F E
↓ ↓ ↓ ↓
O P U V

S10. Ans.(d)

Sol.

Except Bhubaneshwar other three are among major ports of India.

S11. Ans.(b)

Sol.

First is name of the Dam and second is the river.

S12. Ans.(c)

Sol.

I M : R Z :: H F : P L
x×2 x×2
x×2 x×2

S13. Ans.(c)

Sol.

Except Dhyan Chand other three are cricket players.

S14. Ans.(a)

Sol.

Row:1	Row:3	Row:3
$\sqrt{25} \times \sqrt{144} = 60$	$\sqrt{81} \times \sqrt{225} = 135$	$\sqrt{49} \times \sqrt{289} = 119$

S15. Ans.(a)

Sol.

cdefcdefcdef

S16. Ans.(c)

Sol.

7, 6 = H

7, 8 = I

1, 0 = G

4, 4 = H

5, 7 = L

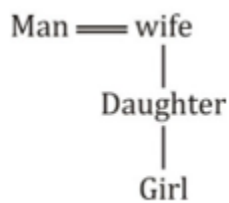
3, 2 = Y

S17. Ans.(d)

S18. Ans.(b)

S19. Ans.(c)

Sol.



S20. Ans.(a)

S21. Ans.(c)

Sol.

Letter	D	E	L	H	I	C	A	U	T
Code	7	3	5	4	1	8	2	9	6

The code of CALICUT is 8251896.

S22. Ans.(c)

Sol. In all other groups, the first number is obtained by adding 2 to the product of the second and the third numbers.

S23. Ans.(c)

Sol. All except Billiards are outdoor games.

S24. Ans.(a)

Sol. The first, third and fifth letters of the first group are each moved one step forward while the second and fourth letters are each moved one step backward to obtain the corresponding letters of the second group.

6 Months Subscription

SSC CGL
TIER-II MAHA PACK

Test Series, Live Classes,
Video Course, Ebooks

Bilingual (With e-Books)

S25. Ans.(a)

Sol. .

The correct sequence is $5^2, 7^2, 9^2, 11^2, 13^2, 15^2$.

So, 36 is wrong.

S26. Ans.(c)

Sol.

Original number	5 2 9 4 6 8 1 7
3	
Number formed by arranging	1 2 3 4 5 6 7 8
9	
digits in ascending order	

Clearly, the positions of 2 and 4 remain unaltered.

S27. Ans.(a)

Sol.

Woman's mother-in-law's only son implies woman's husband.

Now, the brother of the daughter of woman's husband implies woman's son.

S28. Ans.(d)

Sol.

'Tree is very beautiful' -> ka na da ta(i)

'This is strong tree' -> na pa sa ka ... (ii)

∴ is ⇒ na/ka

tree ⇒ na/ka

Clearly,

Code for 'beautiful' cannot be found.

S29. Ans.(d)

Sol.

From option (d),

$$30 \div 5 + 4 \times 10 - 15$$

$$= 6 + 40 - 15$$

$$= 46 - 15 = 31 \text{ (True)}$$

S30. Ans.(b)

Sol.

$$14 \times 3 = 42 - 3 = 39$$

$$\text{Similarly, } 15 \times 3 = 45 - 3 = 42$$

TEST SERIES
Bilingual



SSC CGL 2019-20
PRIME
400+ TOTAL TESTS

Validity : 12 Months