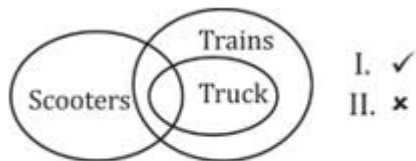


RRB NTPC Reasoning Mega Quiz (Solutions)

S1. Ans.(a)

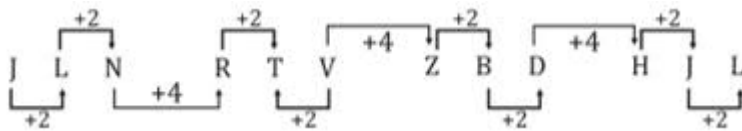
Sol.



Conclusion I follows.

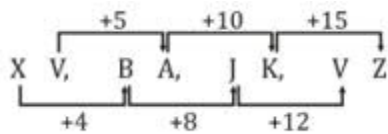
S2. Ans.(b)

Sol.



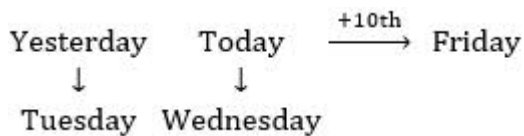
S3. Ans.(c)

Sol.



S4. Ans.(a)

Sol.



S5. Ans.(d)

Sol.

- i. collaborate
- ↑
- iv. combination
- ↑
- ii. constant
- ↑
- iii. Correspondence



RRB NTPC STAGE-I
25 Previous Year Papers
Online Test Series
BILINGUAL

S6. Ans.(d)

Sol. Except MO; all are opposite pairs of letter

S7. Ans.(b)

Sol.

$$4 \times 6 = 24$$

$$8 \times 4 = 32 \text{ not equal to } 31$$

$$9 \times 6 = 54$$

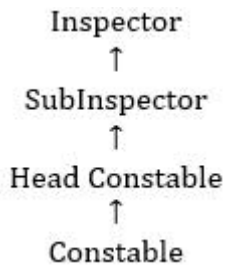
$$7 \times 4 = 28$$

S8. Ans.(b)

Sol. 19 is odd no.

S9. Ans.(c)

Sol.



S10. Ans.(c)

Sol.

$$3, 6, 9, 36, 41, 246$$

$$3 \times 2 = 6$$

$$6 + 3 = 9$$

$$9 \times 4 = 36$$

$$36 + 5 = 41$$

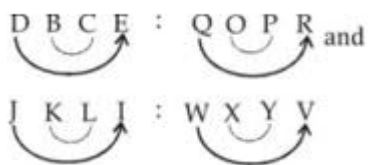
$$41 \times 6 = 246$$

S11. Ans. (b);

Sol. Cure is related to Disease & heal is related to injury.

S12. Ans (c);

Sol.

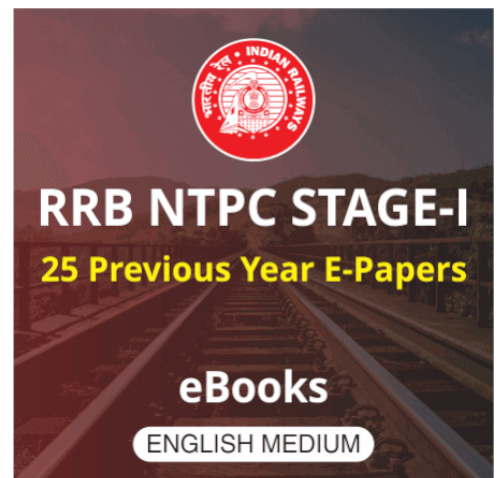


S13. Ans. (d);

Sol.

$$6 \times 7 = 42$$

$$12 \times 7 = 84$$



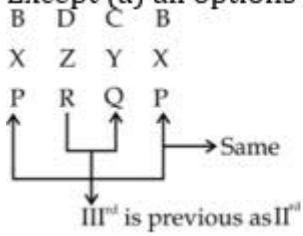
S14. Ans. (b);

Sol. Except (b) all are places where worship is offered.

S15. Ans. (a);

Sol.

Except (a) all options follow following pattern.



S16. Ans.(c);

Sol. Except 100 – 30 all others are in series of $\times 3 + 5$.

S17. Ans.(c);

Sol. 4, 3, 2, 1

S18. Ans. (d);

Sol. d d a a c c

S19. Ans. (c);

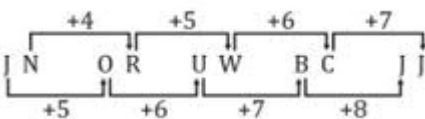
Sol. 4

S20. Ans. (d);

Sol. Q is aunt of S

S21. Ans.(b);

Sol.



S22. Ans. (d);

Sol.

$$30 \times 2 + 2 = 62$$

$$62 \times 3 + 3 = 189$$

$$189 \times 4 + 4 = 760$$

$$760 \times 5 + 5 = 3805$$

S23. Ans.(a);

Sol. As ram is a first division holder , so he will be admitted.

Conclusion I follows.

S24. Ans.(c);

Sol. Anjum Ankit Ram Amit Priya

Priya is sitting at the extreme right end.

RRB NTPC 2019
PRIME PACKAGE

100 + TOTAL TESTS

- 40 Full Length Mocks
- 30 Section Wise Tests
- 10 Previous Years papers
- 20 +Topic Wise tests
- eBooks

BILINGUAL

S25. Ans.(d);

Sol. i. claim

ii. clearly

iv. clerical

iii. clerk

S26. Ans.(a);

Sol. @ ^ * @ # !

S27. Ans.(b);

Sol. $24 + 5 + 9 = 38$

$30 + 7 + 1 = 38$

$19 + 18 + 1 = 38$

S28. Ans. (d);

Sol. $217 \div 7 - 3 + 2 \times 7$

$\Rightarrow 31 - 3 + 14 \Rightarrow 45 - 3 \Rightarrow 42$

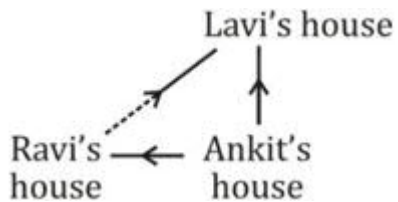
S29. Ans.(c);

Sol.

J K L M / J K L M / J K L M

S30. Ans. (b);

Sol.



∴ Lavi's house is in North-East direction with respect to Ravi's house.

